



CAS Analytical Balance

CAT Series

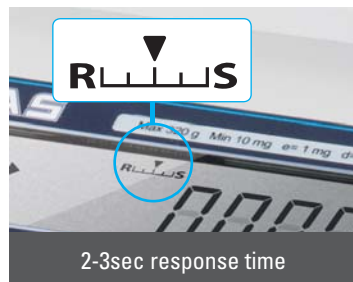


Precision Analytical Balance CAT

CAT is a high precision analytical balance able to adjust its stability and response speed for every application, even during measurement. The balance is ideal to be used in laboratory as it always provides stable weighing results in any circumstances.



Applied UniBloc sensor for stable weighing



2-3sec response time



Ø 91mm large pan



One-touch easy setting



Precision Analytical Balance CAT

Precision Analytical Balance for Stable and Accurate Weighing

Applied with high-performance UniBloc sensor, Analytical Balance CAT provides utmost performance. The CAT has a maximum weighing capacity up to 320g with 0.1mg accuracy. Best features of CAT are its stable weighing performance in any unstable environment and its quick weighing speed within 2-3sec.

Ø91mm Large Pan



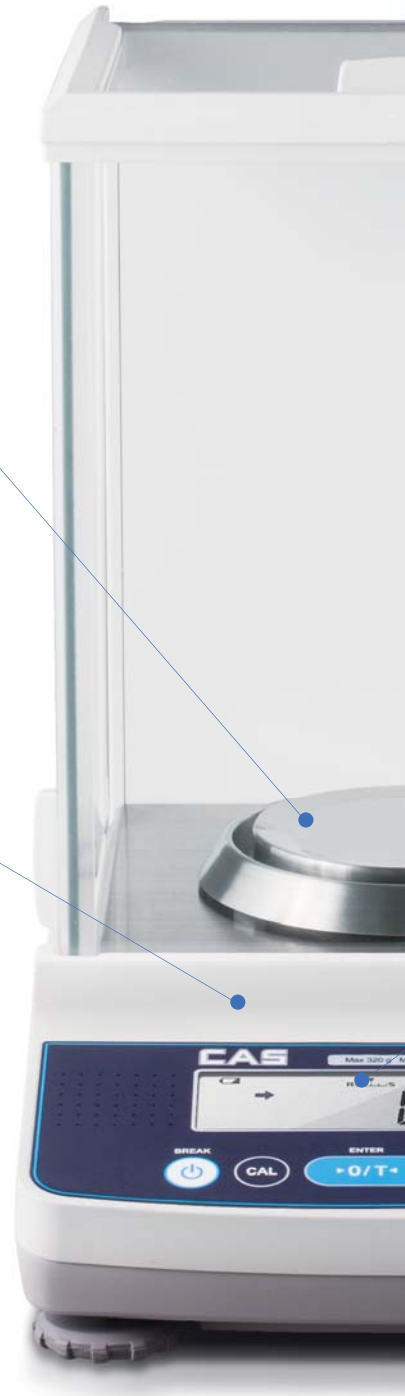
The CAT has a 91mm diameter weighing pan. It is large enough to be set 300ml flask; more stable and easier weighing is possible.

UniBloc Sensor



- Aluminum alloy mass sensor
- Fast weighing speed
- Toughness against impact
- Stability against temperature changing

The CAT incorporates a one-piece aluminum alloy mass sensor technology, UniBloc. It excels in performance, and resists deterioration and damage by ordinary impacts. The UniBloc's compact, uniform structure replaces 70 parts found in a conventional electromagnetic balance sensor assembly and ensures stable temperature characteristics, excellent response time and stable corner-load performance. The UniBloc design permits a consistency of production that assures reliability and a long operational life.



Calibration key

Automated calibration can be started by pressing keys. Also, your external calibration weights can be used for span calibration.

※ Calibration record: You can leave a record of execution of calibration.
With serial number and ID of balance.



Comparator Function

Compare samples to target values or pass/fail criteria clearly



Expanded Piece Counting Function

Unit weights of a sample can be easily entered, stored and recalled for use.



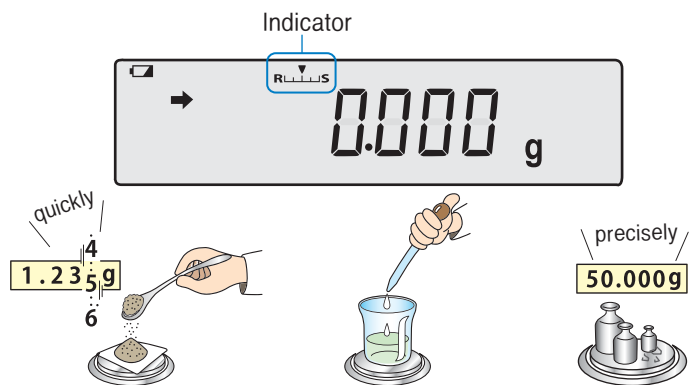
Formulation Mode

Convenient for making many measurements of minute samples and seeking the total mass.

Easy Setting in Five Levels

Adjustable Response Time

Quickly adjust the desired ratio of stability(S) and response(R) for every application, even during measurement, with one-touch operation.



Responsiveness priority

- When you want to do a quick measurement
- When you want to raise the operation efficiency
- When you want to measure or blend the determination of liquid or powder samples



Stability priority

- When the numerical value is unstable
- When using in the vibration environment
- When the airflow exists constantly and the numerical value fluctuates frequently



% measurement

The weight of the sample is converted to a percentage of the reference weight.



Power saving function

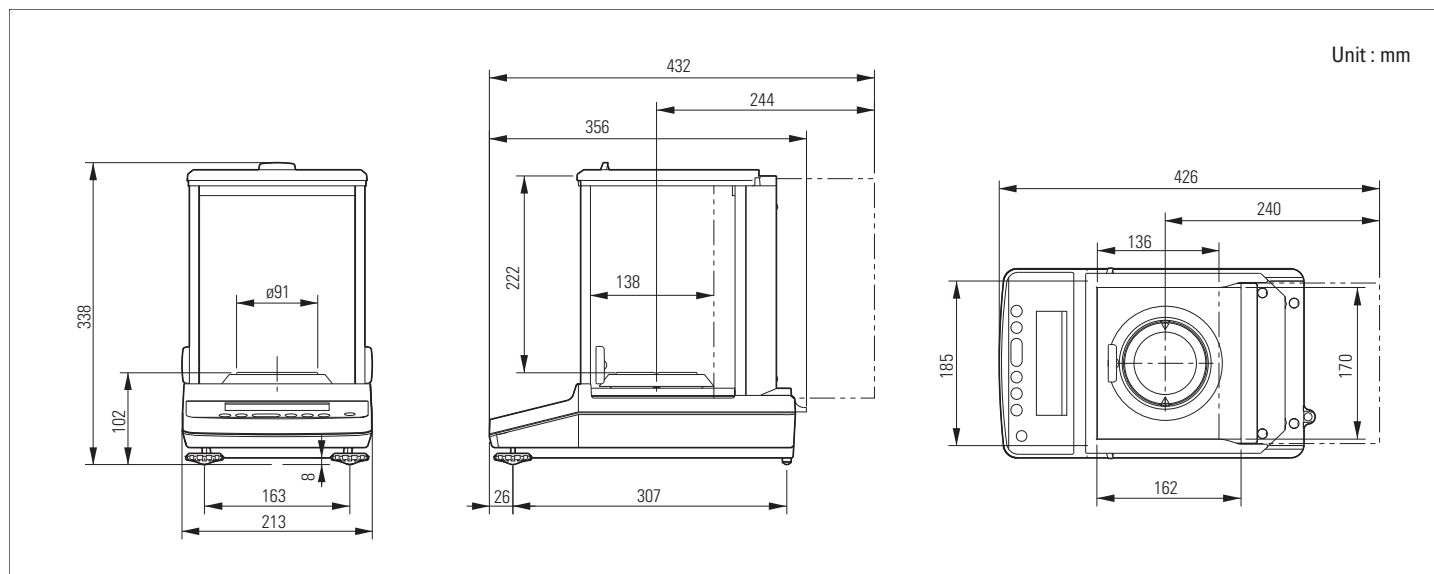
When weighing operation ends, power automatically turns off at a set time.



Password lock

In order to ensure that the menu settings are not changed by mistake, the person managing the Balance controls the password and can prohibit menu operation.

Dimension



Specification

CAT						
Model Name	CATX324	CATX224	CATX124	CATY324	CATY224	CATY124
Capacity	320g	220g	120g	320g	220g	120g
Number of verification scale interval	320000	220000	120000	320000	220000	120000
Scale interval (d)	0.0001g					
Range of use	0.01g~320g	0.01g~220g	0.01g~120g	0.01g~320g	0.01g~220g	0.01g~120g
Response time	Approx. 3.0 seconds					
Ambient operating temperature	10 ~ 30					
Pan size (mm)	Ø 91mm					
Main body dimensions (mm)	Approx. 210(W) x 340(D) x 325(H) mm					
Main body weight	CATX : Approx. 6.2 kg / CATY : Approx. 6.0 kg					
Display	LCD					
Rated electric power supply	DC 12V, 1A					
I/O terminal	DATA I/O					
Altitude	Up to 2000m					
Installation Site	device may only used indoors					
AC adapter (primary)	AC 100 ~ 240V, 400mA 50/60 Hz					

Option

- EP-100 Printer
- EP-110 Printer
- I/O-RS cable
- Protection Cover
- USB conversion kit



Specifications are subject to change without notice improvement.

CAS BLDG., 1315, YANGJAE-DAERO
GANGDONG-GU, SEOUL, KOREA
TEL_82 2 2225 3500 / FAX_82 2 475 4668

www.globalcas.com

